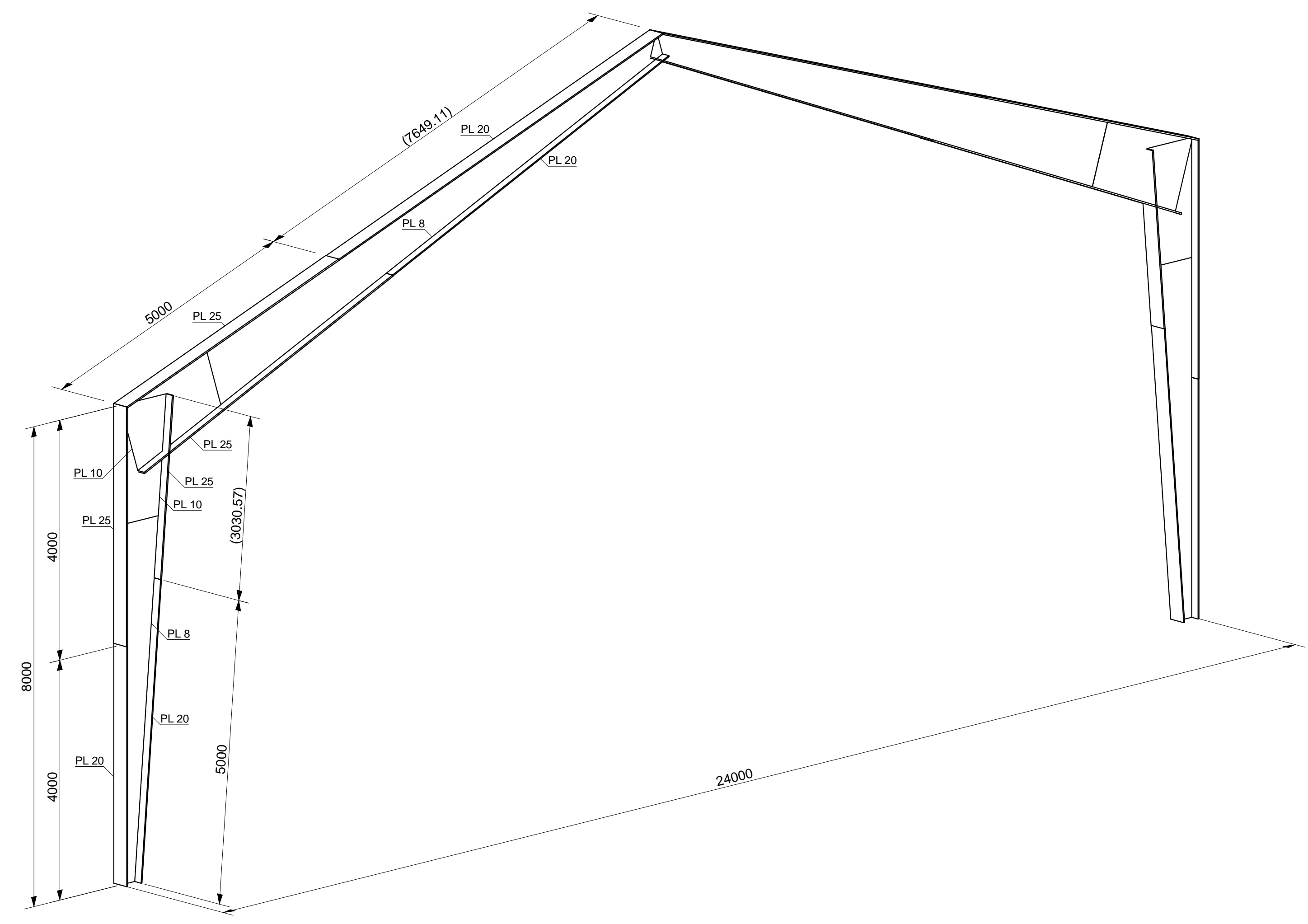


SECTION



3D View

Model the PEB as shown using PLATES

- The Column Webs have varying thicknesses of 8 mm and 10 mm as shown
- The Column flanges have varying thicknesses of 20 and 25 mm as shown
- The column web heights start from 300 mm and end at 1000 mm
- The Beam webs have varying thicknesses of 8 mm and 10 mm as shown
- The Beam Flanges have varying thicknesses of 20 and 25 mm as shown
- The Beam web heights start from 1200 mm and end at 400 mm
- Several Details have been shown to give exact details of how the Flanges change thicknesses
- Use the "BuiltUp Tapered Frame" Macro under the "Structural Members" section of the Macro Gallery to create the members
- You can watch the tutorial here: <https://youtu.be/W7EzFUNqbGA>

